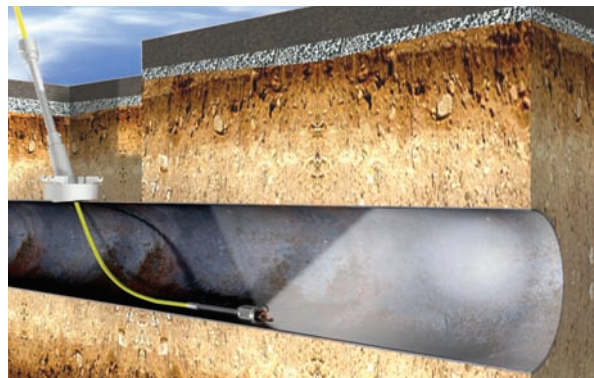




Approved for use on live gas

## New Pan & Tilt Live Gas CCTV System



# See inside larger gas mains

Even bigger savings on excavation, reinstatement and disruption

The new SynthoCam™ 'Pan and Tilt' CCTV camera system provides increased circumferential vision in larger diameter mains. Developed by Synthotech specifically for gas industry use, the system provides a safe, quick and economical method for internal inspection of live pipelines.



### Remote control camera

- 270 degree circumferential vision
- Adjustable light and focus
- Metallic pipelines 12 to 24 inch diameter
- Up to 2bar operating pressure
- Access through a 2½ inch BSP drilling



*"The new Pan and Tilt model enables me to see the whole circumference of the main and focus in on problem areas. This is particularly helpful when inspecting large diameter pipes."*

**Process Support Officer, National Grid Gas West Midlands Gas Operations**

### SynthoCam™

The modular, push-rod CCTV camera system allows internal inspection of live gas mains up to 2bar operating pressure, without the requirement for large access excavations. The SynthoCam™ system is supplied with full back-up and support, including comprehensive on-site training.

- |  |  |
|--|--|
| ● Substantial operational cost savings | ● Faster project progress/completion   |
| ● Minimal excavation                   | ● No interruption to consumer supplies |
| ● Reduced reinstatement                | ● Less environmental impact            |
|  | ● Approved by UK distribution networks |

**Mains repair and replacement applications:**

